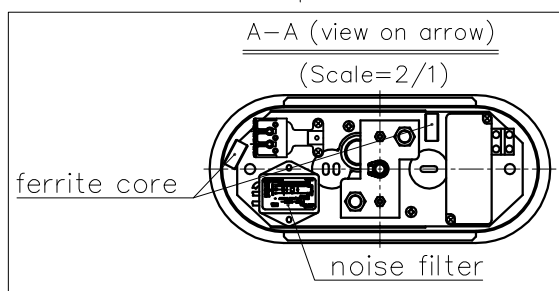
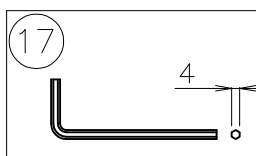
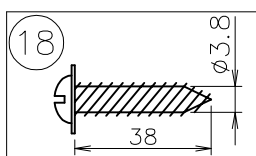


Led Area: Enlargement
(Scale=2/1)



⚠ Safety Precautions

- For indoor use only. Installation outdoor and at the place of high humidity should be avoided.
- It may cause electric shock or fire.
- To be recessed or installed on the ceiling. Do not put on inclined ceiling, wall and floor to avoid falling.

19					9	Face nut	NYRON	1	White	OTo be recessed or installed on the ceiling.Do not put on inclined ceiling, wall and floor to avoid falling.				
18	Fixing Screw	SWRH	2	Nickel plating	8	Wire adust gear	SB	2	Nickel Plating					
17	Specialized tool	SWRH	1	Black be dyed	7	Device of lighting LED	RESIN	1	Input 230V AC 50-60Hz Output DC5V-36V					
16	Base of LED	ADC	2	White Painting	6	Mounting plate	SPC	1	White Painting	Equipment type	direct surface mounting			
15	with lens of LED	AP/PC	6	3.2V 1.1W White	5	Cap screw	SWRM	2	Chromating	type	recessed mounting			
14	without lens of LED	AP	2	3.2V 1.1W White	4	Wire earth	BsB	2						
13	Reflector	AP	2	Specular anodized	3	Cord cap screw	NYRON	1	White	lamp	LED1.1Wx8			
12	Main body	Rigid polyurethane foam	1	White Painting	2	Flange	SPC	1	White Painting					
11	Cord	NYRON	1	Clear	1	Terminal block	PBT	1	300V.20A	seed color				
10	Wire	SUS	2	φ1mm	品番	品 名		材質	数量	摘 要	catalogue NO	PE110	型番	60PC-05K6-80
triangulation method		作図	y i	単位	mm	尺度	—	質量	2.5kg					

specifications and appearance of this product are subject to change without notice to improve, to please note that